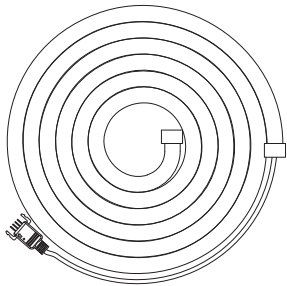


Smart Neon Rope Light
Operation ManualScan the QR
code to watch the
How-To videosWorks
with AiDot

Function Introduction

16 million
colorAPP
controlTiming &
countdownVoice
control

Dimming

music
rhythm

01

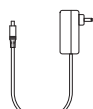
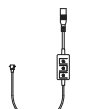
Package Item

Item List	Quantity
Controller Box	1 PC
Power Adapter	1 PC
RGB Neon Rope Light	1 Roll
Manual Instruction	1 PC
Fixed accessories	9 PC
3M sticker	9 PC

Led Neon Rope Light Kits



Neon Rope light

Power
Adapter

Controller

Fixed
accessories
(x9)3M
sticker
(x9)

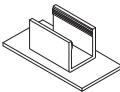
02

Installation

STEP 1:

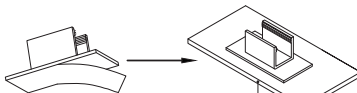
Tear one side of 3M sticker
release paper

STEP 2:

Apply 3M sticker to U-shaped
accessory

STEP 3:

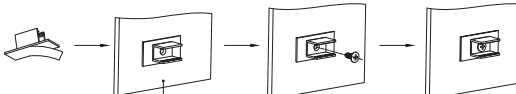
① Fix 3M sticker horizontally, tear the release paper on the other
side of 3M sticker and stick to the required installation position.
Refer to the diagram below:



Horizontal desktop

03

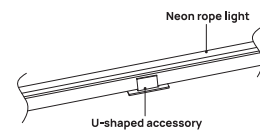
② Fix the 3M sticker vertically, stick the release paper on the other side
of the 3M sticker to the required installation position, and then use a
screwdriver to insert the screw through the hole and fix the U-shaped
accessory on the wall. Refer to the diagram below:



Vertical wall

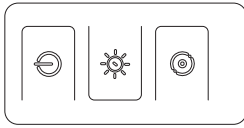
STEP 4:

Install the neon rope light into the U-shaped accessory



04

Introduction of the Controller



	<p>1. Short press (<1s) on/off key, switch the switch mode, short press once to turn on the light strip, press again to turn off. In the non-reset state, it will memorize the state of the light strip before it was turned off last time.</p> <p>2. Press and hold the Power button for (>5s) to enter the factory state mode: R-G-B gradient once.</p>
	<p>1. Long press (>1s) to adjust brightness, 100%-1%-100%.</p> <p>2. Short press (<1s) to switch in sequence according to the set scene mode.</p>
	<p>1. Local music rhythm on and rhythm mode switch button, short press (<1s) to turn on the local music rhythm, the default Pop mode.</p> <p>2. Short press again to cycle the music rhythm mode. Long press (>3s) the switch button to the set scene mode.</p>

05

Installation Instructions

1. After installing the smart neon rope light, power on.
2. The rope light will gradually blink R-G-B, and the light will enter the state of distribution network.
3. To connect neon rope light to the Internet, download the Aidot APP and follow the APP guidelines.

Quick Start Guide

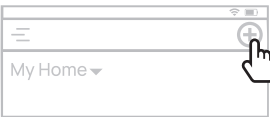
1. Scan the QR code below, or search for "AiDot" in App Store or Google Play.



Google, Google Home and Google Play are trademarks of Google LLC.

06

2. Create an account and sign in. Tap '+' to add the smart neon rope light.



3. Follow the instructions on the App.
(Note: Please turn on Bluetooth and location.)

07

Troubleshooting:

1. Cannot connect the neon rope light to AiDot App.

- Check whether the neon rope light is powered on.
- Check whether the Wi-Fi of your smartphone is enabled. Please make sure Wi-Fi connected to your smartphone is 2.4GHz (5GHz Wi-Fi is not supported).
- Please check whether Bluetooth and GPS are turned on.
- Make sure your smartphone is close to the neon rope light in the first configuring network.
- Check if you have entered the correct Wi-Fi password during Wi-Fi setup. Make sure the distance between the neon rope light and router is less than 50ft.
- Check whether the home network is stable. If not stable, let the blub connect to another phone's hotspot.

2. What is the maximum number of neon rope lights I can connect via Bluetooth?

- Up to 6 neon rope lights can be connected usual, but the specific quantities is based on the brand of your smartphone.

3. How many neon rope lights can be connected to one phone?

- Up to 20 neon rope lights can be connected to one phone if the network is normal.

4. The adhesive tape is not strong enough.

- Make sure the installation surface is clean and dry.
- Firmly press over the strip after sticking.
- Reinforce the installation via more clips and tape.

08

Frequently Asked Questions:

1. How to Connect Alexa, Google Home or SmartThings?

Our neon rope lights cannot be found directly by Alexa, or through Alexa's "discover devices" function.

You need to connect the neon rope lights to the AiDot app first, and then connect the AiDot to the Alexa app so that the neon rope lights added to the AiDot can be synced to the Alexa app.

- After you have connected your device to AiDot App, go to the AiDot > Integration > choose Amazon Alexa.
- Put in your Alexa username and password to connect the two accounts.
- This enables the AiDot skill within Alexa. (Please note: the skill is AiDot.)
- Once connected, use your nearest Alexa device and address it using the name you assigned in the AiDot app. You can tell it to turn the light on or off, change colors, dim the neon rope light etc.
- Google Home or SmartThings connect devices follow the same steps as Alexa.

2. How to reset the smart neon rope lights?

- Turn on and turn off the neon rope light consecutively 6 times (on and off counts for once). Keep the interval between 0.5s-1.5s.
- Then turn it on again, and you'll see the light neon rope light will blink twice, which means reset success.
- After resetting the device, the device will still be displayed on the App.

3. What should I do if the neon rope light offline?

Here are some suggestions that may help you.

09

- Please make sure the SSID or password of the WiFi has been changed or not. If it has not been modified, please restart the device.
- If it has been modified, please reset the device and re-add the device to the AiDot APP with the new Wi-Fi SSID and password.
- Please check the strength of the WiFi that the device is connected to.
- If the connected network environment is weak, it may also cause the device offline. In this case, please move the router closer to the device or move the device closer to the router.
- If possible, please remove some infrequently used networked devices on the router to reduce the Wi-Fi load.
- Please make sure the voltage of the device is stable, unstable voltage will cause the device to keep rebooting and unable to connect.
- Please check whether the router or device is in a power-off state or has been in a power-off state for a long time.
- If it is powered off, please re-power it.
- If it is powered off for a long time, please reset the device and re-add it to AiDot APP.

4. Cannot sync the neon rope lights to the beat of my music.

- Move the control box closer to the music source.
- Clean the mic on the control box then try again.

5. How to get support?

- Email: service@linkind.com
- Support Phone: 1-877-770-5727 (Monday-Friday 9:00am-5:00pm)

10

⚠Warning

This device complies with part 15 of the FCC Rules. Operation is subject to the following two conditions: (1) this device may not cause harmful interference, and (2) this device must accept any interference received, including interference that may cause undesired operation.

Any changes or modifications not expressly approved by the party responsible for compliance could void the user's authority to operate the equipment.

NOTE: This equipment has been tested and found to comply with the limits for a Class B digital device, pursuant to Part 15 of the FCC Rules. These limits are designed to provide reasonable protection against harmful interference in a residential installation. This equipment generates, uses and can radiate radio frequency energy and, if not installed and used in accordance with the instructions, may cause harmful interference to radio communications.

However, there is no guarantee that interference will not occur in a particular installation. If this equipment does cause harmful interference to radio or television reception, which can be determined by turning the equipment off and on, the user is encouraged to try to correct the interference by one or more of the following measures:

- Reorient or relocate the receiving antenna.
- Increase the separation between the equipment and receiver.
- Connect the equipment into an outlet on a circuit different from that to which the receiver is connected.

11

— Consult the dealer or an experienced radio/TV technician for help.

To maintain compliance with FCC's RF Exposure guidelines, This equipment should be installed and operated with minimum 20cm distance between the radiator and your body. Use only the supplied antenna.

⚠Cautions

To avoid personal injury and/or possible product damage, the following cautions must be followed:

1. To prevent early lamp failure, lamp should only be installed in operating environments ranging between: -10 C and +40 C (14°F and +104°F).
2. Suitable for damp locations.
3. Not for use with dimmers.
4. Lamp dims via wireless control and will not operate with a dimmer switch.

12

Contact Us

SPRING SUNSHINE TECHNOLOGY CO., LIMITED
FLAT/RM 01-04, 24/F, FU FAI COMMERCIAL CENTRE,
27 HILLIER STREET, SHEUNG WAN, HK
☎ Phone: 1-877-770-5727 (Mon.-Fri. 9 to 5 PST)
✉ Email: service@linkind.com
🌐 http: //www.linkind.com
Made in China

Manufacturer: Leedarsen IoT Technology Inc.
Address: No.1511, 2nd Fanghu North Rd, Huli
District, Xiamen, China
📱 @linkind.lights
✉ @linkindofficial
@linkindofficial

13