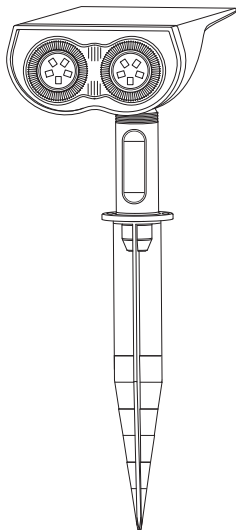


Linkind

User Manual

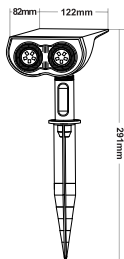
10LEDS Solar Landscape Spotlights



Scan the QR code
to watch the How-To
videos



SPECIFICATION



waterproof button switch

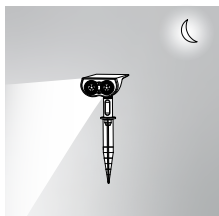


Nut fixation

LED	10LEDs
Location Type	Wet location
Working temperature	-10-40°C
Housing material	ABS
Induction mode	Light control
Illumination angle	90°

INTRODUCTION

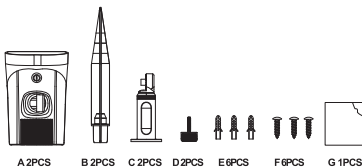
The solar landscape spotlights can automatically detect the changes in the brightness of the external environment. When the brightness is low enough, it will automatically switch from energy-saving mode to lighting mode without motion detection (Auto on at night / Auto off at sunrise).



PACKAGE CONTENTS

- A 2 x Solar Landscape Spotlights
- B 2 x Plastic Anchor
- C 2 x Plastic rod
- D 2 x turn-knob
- E 6 x Gecko screw
- F 6 x Screws
- G 1x User Manual

*Note: IF 4 Pack, content A~F will double.
IF 6 Pack, content A~F will triple.



A 2PCS

B 2PCS

C 2PCS

D 2PCS

E 6PCS

F 6PCS

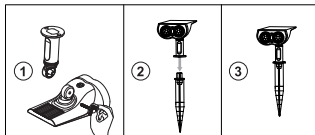
G 1PCS

INSTALLATION

Press the red button and select a desired mode. Then choose a place that can get enough sunshine to install the light, the more sunshine it gets, the longer it can illuminate.

Method 1: Ground Inserted

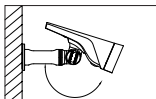
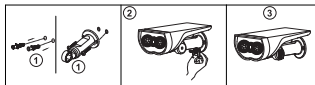
- ① Connect the ground stake with the light. Then, adjust the angle of lamp holder and tighten the knob.
- ② Please insert the ground stake accessory into the main body of the device for connection.
- ③ Insert the whole light into the ground vertically.



Note: Please insert the turn-knob from the correct side as shown above.

Method 2: Wall Mounted

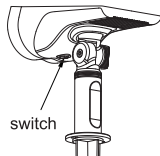
- ① Punch two holes on the wall with a drill bit and insert the attached wall plugs into holes. Then, twist the screws through the screw holes of holder into the wall plugs.
- ② Adjust the angle, then tighten the holder and the light through the knob screw. Adjustable Angle: horizontal 180°, vertical 90°



Note: Please insert the turn-knob from the correct side as shown above.

OPERATION GUIDE

The default mode of the product is OFF mode. Press the red button to adjust modes when using the light.



3 LIGHTING MODES

LOW Light Mode

Press the power button for once, the landscape light will charge but not light up in the day, and it will automatically light up in darkness or at night. (Max working time: 12Hrs consecutive lighting)

HIGH Light Mode

On the basis of LOW Light Mode, press the power button again, the landscape light will charge but not light up in the day, and it will automatically light up in darkness or at night.(Max working time:6Hrs consecutive lighting)

OFF:

On the basis of HIGH Light Mode, press the power button again, the landscape light will power off.

WARM TIPS

- 1.It is recommended to turn off the light and charge it under direct sunlight for 48 hours before the first use. Make sure the product has enough power. Please noted that the working time of the solar lamp may vary due to weather changes. In rainy days ,cloudy or winter with insufficient light. The working time will be shortened.
- 2.During the installation, please make sure the landscape light is installed under direct sunlight where there is no shade or eave to shelter the solar panel. Otherwise, the lighting time will be shorter.
- 3.Whether the solar landscaping spotlights can produce the best lighting effect or not depends on sunlight intensity, geographical location, weather conditions, seasons and other conditions.

TROUBLE SHOOTING

If the light failed to turn on, please

- a) check if there is any light source around;
- b) charge the light for a while and then cover the solar panel to have a test;
- c) make sure you hear a clear "click" sound when you press the button.

Linkind

Our goal is to bring you the best shopping experience on Amazon. If you have any questions about our product, please feel free to contact us. Our customer service is right here to resolve the case.

- ☎ 1-855-999-6677 (Mon.- Fri.9 to 5 PST)
- ✉ service@linkind.com
- 🌐 <http://www.linkind.com>
- 💬 Why not share your stories to help other buyers?

- 📘 @linkind.lights
- 📷 @linkindofficial
- ▶ @linkindofficial



Made in China