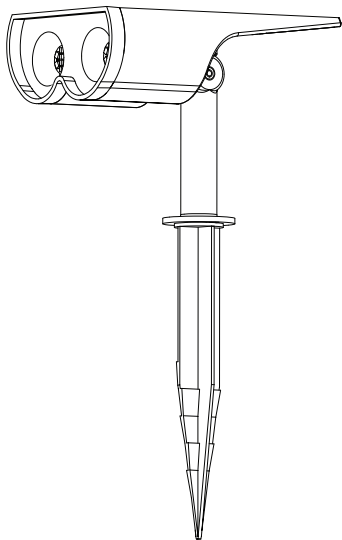


User Manual

16 LEDs RGBW

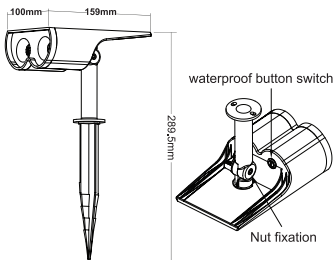
Solar Landscape Spotlights



Scan the QR code
to watch the
How-To videos



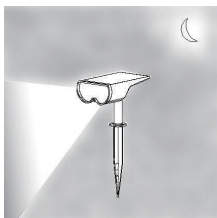
SPECIFICATION



LED	16 LEDs
Location Type	Wet location
Working temperature	-10-40°C
Housing material	ABS
Induction mode	Light control
Illumination angle	90°

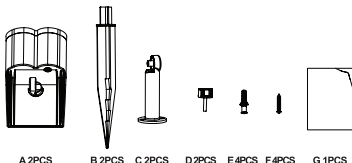
INTRODUCTION

The solar landscape spotlights can automatically detect the changes in the brightness of the external environment. When the brightness is low enough, it will automatically switch from energy-saving mode to lighting mode without motion detection (Auto on at night / Auto off at sunrise).



PACKAGE CONTENTS

- A 2 x Solar Landscape Spotlights
- B 2 x Plastic Anchor
- C 2 x Plastic rod
- D 2 x turn-knob
- E 4 x Gecko screw
- F 4 x Screws
- G 1x User Manual



*Note: If 4 Pack, content A-F will double
If 6 Pack, content A-F will triple

A 2PCS

B 2PCS

C 2PCS

D 2PCS

E 4PCS

F 4PCS

G 1PCS

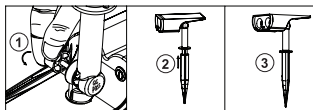
INSTALLATION

Press the back button and select a desired mode. Then choose a place that can get enough sunshine to install the light, the more sunshine it gets, the longer it can illuminate.

Method 1: Ground Inserted

① Connect the ground stake with the light. Then, adjust the angle of lamp holder and tighten the knob.

② Insert the whole light into the ground vertically.

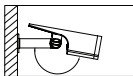
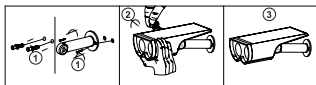


Note: Please insert the turn-knob from the correct side as shown above.

Method 2: Wall Mounted

① Punch two holes on the wall with a drill bit and insert the attached wall plugs into holes. Then, twist the screws through the screw holes of holder into the wall plugs.

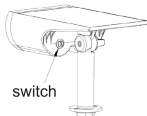
② Adjust the angle, then tighten the holder and the light through the knob screw. Adjustable Angle: horizontal 180°, vertical 90°



Note: Please insert the turn-knob from the correct side as shown above.

OPERATION GUIDE

The default mode of the product is OFF mode. Press the back button to adjust modes when using the light.



4 LIGHTING MODES

Press the power button, turn on the solar landscape light. It will charge but not light up in the day and automatically be on in darkness or at night.

Short press once to switch among colors under below 3 Modes in a sequence:

Solid Color Mode

Red, Green, Blue, Max working time: 12 hours.

Mix Color Mode

Red & Green, Red & Blue, Green & Blue, Rainbow(3 colors mixed),
Max working time: 12 hours.

Cool White Mode

Daylight white(6500K) for daily illumination, Max working time: 12 hours.

Long Press the button for 2 seconds at any color mode above, it will shift to a dynamic status:

Color Cycling Mode

The solar light will change the color gradually in a cycle at a Low Bright. Max working time: 12 hours; Short press the button, it will turn to high bright color cycling. Max working time: 6 hours; Short press again, it will shift to low bright changing. Long press the button for 2 seconds to exit this mode to Solid Color Mode.

OFF

Keep hitting the button till it jumps over all colors to daylight white and turns off then.

WARM TIPS

- 1.It is recommended to turn off the light and charge it under direct sunlight for 1-2 days before the first use. Make sure the product has enough power.
- 2.During the installation, please make sure the landscape light is installed under direct sunlight where there is no shade or eave to shelter the solar panel. Otherwise, the lighting time will be shorter.
- 3.Whether the solar landscaping spotlights can produce the best lighting effect or not depends on sunlight intensity, geographical location, weather conditions, seasons and other conditions.

TROUBLE SHOOTING

If the light failed to turn on, please

- a) check if there is any light source around;
- b) charge the light for a while and then cover the solar panel to have a test;
- c) make sure you hear a clear "click" sound when you press the button.

Linkind

Our goal is to bring you the best shopping experience on Amazon. If you have any questions about our product, please feel free to contact us. Our customer service is right here to resolve the case.

☎ 1-855-999-6677 (Mon.-Fri.9 to 5PST)

✉ service@linkind.com

🌐 <http://www.linkind.com>

🗣 Why not share your stories to help other buyers?

📘 @linkind.lights

📷 @linkindofficial

▶ @linkindofficial



Made in China